

FACT SHEET



WEATHER

☁️ SPRING | ▲ 26°C
▼ 10°C

☀️ SUMMER | ▲ 30°C
▼ 17°C

☁️ AUTUMN | ▲ 24°C
▼ 9°C

☁️ WINTER | ▲ 18°C
▼ 7°C

LOCATION

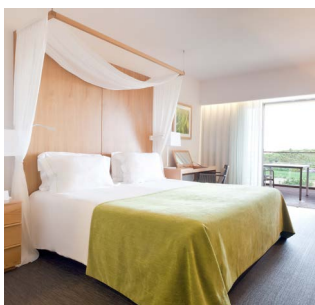
The EPIC SANA Algarve, located above Praia da Falésia beach, is set in 8 hectares of pine forest and green space. Its prime location gives guests quick and easy access to the beach. The extensive areas of trees and gardens make for a pleasant stroll between the various leisure areas available at the resort, with the cliff tops in the background.

SERVICES AND FACILITIES:

3 Outdoor pools for adults | 2 Outdoor pools for children | Indoor heated pool | Bar service at the pools | 2 Deluxe Rooms with Resort View and 1 So Suite T0 for guests with reduced mobility | Parking with electric charging | Little Stars Kids Club with Children's Play Area (seasonal) | 2 padel courts | Car Rental | 24hr Medical Assistance (on-request) | Laundry / Dry Cleaning | 24hr Room Service Multilingual Staff | Special Green fees at various golf courses in the Algarve | Free Wi-Fi in bedrooms and public areas.

NEARBY

Falésia/Albufeira
Olhos d'Água
Golf
Water sports
Diving
Sport fishing
Outdoor activities
Football pitch with all-weather surface
Water Parks
Faro Airport (FAO): 37 km away



OUR ROOMS

160 Deluxe Rooms (with 32 m² and private balcony/terrace) | 2 Deluxe Ocean Side Suites (64 m²) | 44 Deluxe Resort View Rooms | 68 Deluxe Pool View Rooms | 48 Deluxe Ocean Side Rooms | 2 Deluxe Ocean Side Suites

The 24 Deluxe Garden Suites are the most spacious and exclusive option, with areas between 73 m² - 175 m², which include a living area and allow for greater autonomy and privacy.

10 Deluxe Garden Suites (Single level - 73 m²) | 13 Deluxe Garden Suites Duplex (110 m²) | 1 Grand Deluxe Garden Suite Duplex (175 m²)

43 Resort Suites with a more family atmosphere, of which 8 allow conversion to a So Suite Home T2 (Studio + One Bedroom).
20 So Suite T0 (38 m²) | 23 Suite Home T1 (79 m²)

All 229 accommodation units have a wide range of amenities and facilities that make your stay and facilities that make your stay even more comfortable.



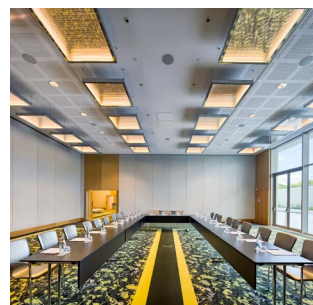
BARS AND RESTAURANTS

The EPIC SANA Algarve has 5 seasonal restaurants and 2 bars.

Restaurants:
Abyad, buffet or à la carte | Al Quimia, fine dining cuisine | Open Deck, snacks and Portuguese cuisine | Lima, Cucina & Cocktails, Italian cuisine | UDDO - Japanese cuisine.

They provide a limitless journey through international, fusion, Portuguese flavours and, of course, with a special focus on regional ingredients.

Bars:
Bluum Bar, open all year, has a trendy line-up, bold cocktails and a lively musical programme;
Open Deck (seasonal), located by the pools, refreshing drinks and snacks are served during the day.

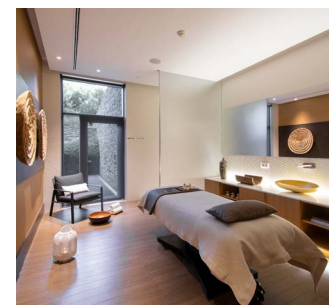


CONGRESS CENTER

The EPIC SANA Algarve has a Congress Centre measuring 1.848 m², natural light and over 1.000 m² of space outside.

The Sala Atlântico (Ground Floor) measuring 1.029 m², can be divided into 3 rooms of between 245 m² and 755 m², with a ceiling of 4,2 m. It is also possible to use the foyers measuring between 274 m² and 346 m².

The Sala Pacífico (Floor -1) measuring 819 m², can be divided into rooms of between 62 m² and 619 m², with a ceiling of 4,2 m. It is also possible to use the foyers which measure between 114 m² and 314 m². Rooms with built-in audiovisual equipment.



SAYANNA WELLNESS & SPA

With around 1.500 m², the SPA welcomes you in your search for well-being of mind and body. It includes 5 treatment rooms, 1 Vichy shower and 1 outdoor treatment pavilion for couples with garden and private jacuzzi. There is also a sauna, steam room and relaxation pool.

The Fitness Center has a gym with modern equipment for cardiovascular and weight training. The facility also offers a studio for group lessons.

Wellness Retreats available.